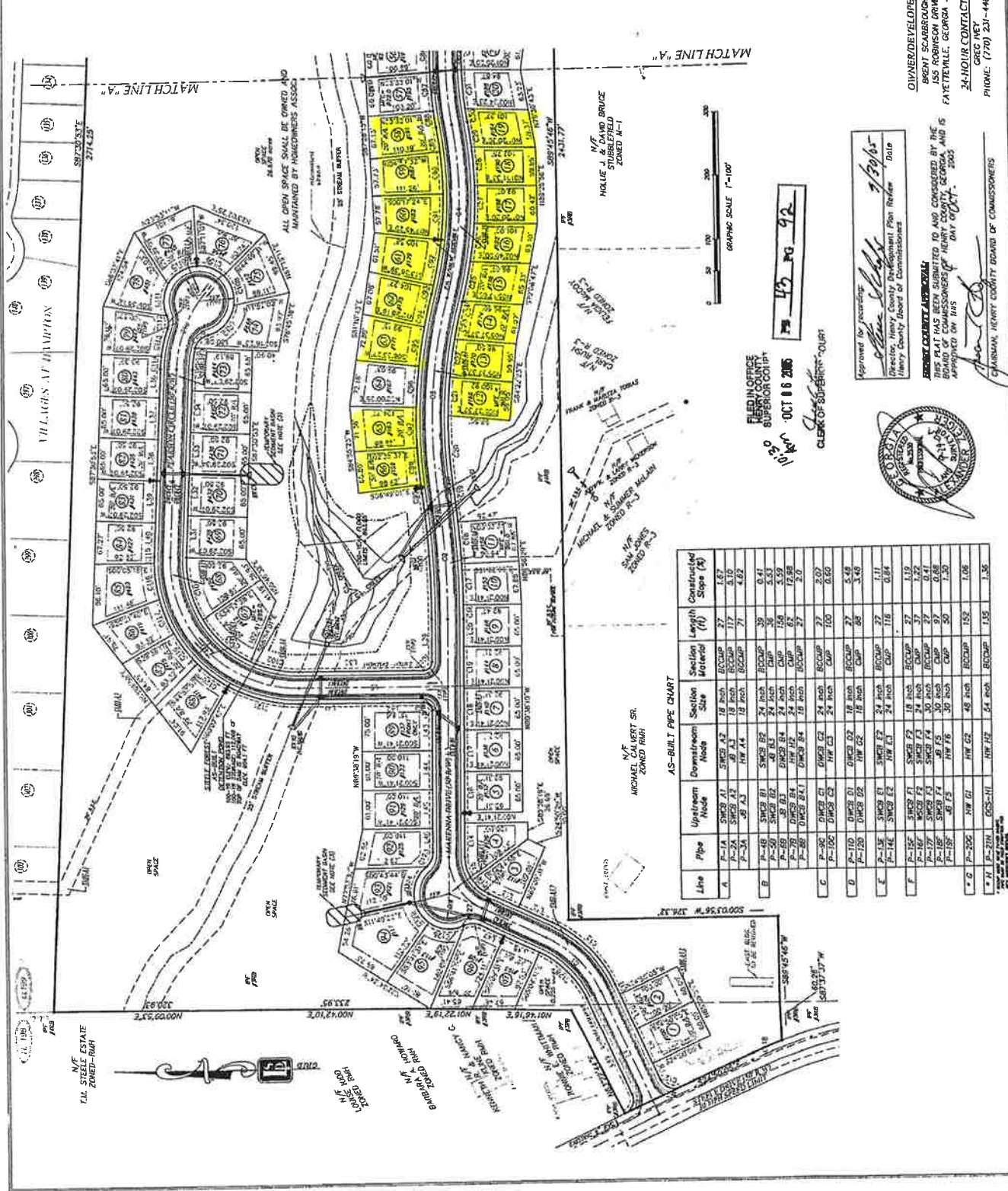


LANDMARK SURVEYING & PLANNING, INC.
 218 WOOD DRIVE
 Stockbridge, GA 30281
 Phone: (770) 507-1389
 Fax: (770) 507-1389
 Land Surveying
 Land Development
 Construction Layout

STEELE FOREST
 Final Plat For
 Land Lot 198 & 199 Of The 6th District
 Henry County, Georgia

DATE: July 1, 2003
 SHEET NUMBER: 2 of 3

APP. POINT FILE NO.:
 REVISIONS:
 PROJECT NO.: DD0202



AS-BUILT PIPE CHART

Line	Upstream Node	Downstream Node	Section Size	Section Material	Length (ft)	Constructed Slope (%)
A	P-1A	SWR3 A1	18 inch	BOCCUP	27	1.67
	P-2A	SWR3 A2	18 inch	BOCCUP	117	5.10
	P-3A	HW A3	18 inch	BOCCUP	71	4.82
B	P-4B	SWR3 B1	24 inch	BOCCUP	39	0.41
	P-5B	SWR3 B2	24 inch	BOCCUP	38	5.51
	P-6B	HW B3	24 inch	CMP	158	5.59
	P-7B	DMR3 B4	24 inch	CMP	67	12.88
	P-8B	DMR3 B1	18 inch	BOCCUP	27	2.0
C	P-9C	DMR3 C1	24 inch	BOCCUP	27	2.07
	P-10C	DMR3 C2	24 inch	CMP	100	0.60
D	P-11D	DMR3 D1	18 inch	BOCCUP	27	5.49
	P-12D	DMR3 D2	18 inch	CMP	88	3.48
E	P-13E	SWR3 E1	24 inch	BOCCUP	27	1.11
	P-14E	SWR3 E2	24 inch	CMP	116	0.84
F	P-15F	SWR3 F1	18 inch	BOCCUP	119	1.27
	P-16F	SWR3 F2	30 inch	BOCCUP	27	0.41
	P-17F	SWR3 F3	30 inch	CMP	97	0.68
	P-18F	HW F4	30 inch	CMP	50	7.50
	P-19F	HW F5	30 inch	CMP	50	1.50
G	P-20G	HW G1	48 inch	BOCCUP	152	1.06
H	P-21H	HW H1	24 inch	BOCCUP	135	1.35

PLANNING SOURCE SUPERVISOR COLBY
 OCT 08 2006
 W.A. 103.0
 CLERK OF SUPERIOR COURT



Approved for recording:
[Signature]
 Director, Henry County Development Plan Review
 Henry County Board of Commissioners

OWNER/DEVELOPER
 BRENT SCARBROUGH
 155 ROBINSON DRIVE
 FAYETTEVILLE, GEORGIA 30214
 24-HOUR CONTACT
 GREG IVEY
 PHONE: (770) 231-4487

THIS PLAN HAS BEEN SUBMITTED TO AND CONSIDERED BY THE BOARD OF COMMISSIONERS OF HENRY COUNTY, GEORGIA, AND IS APPROVED ON THIS DAY OF OCT., 2003.

CHAIRMAN, HENRY COUNTY BOARD OF COMMISSIONERS
[Signature]